

# BABY BORN IN BETHLEHEM

Three-part Mixed Chorus and Piano\*

Words adapted by Victor C. Johnson from Edward Caswall and John W. Work

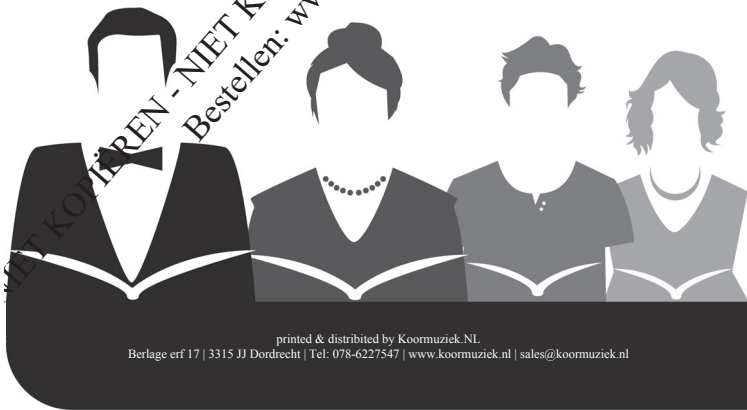
Music by Victor C. Johnson

Ranges: Part I Part II Part III

# BABY BORN IN BETHLEHEM

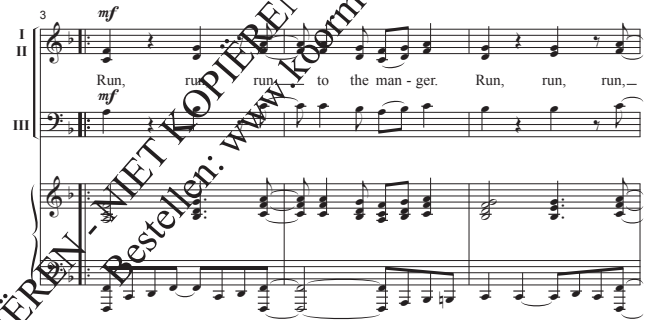
Words adapted by Victor C. Johnson from Edward Caswall and John W. Work  
Music by Victor C. Johnson

ECC17.2174.01G



printed & distributed by Koormuziek.NL

Berlage erf 17 | 3315 JJ Dordrecht | Tel: 078-6227547 | www.koormuziek.nl | sales@koormuziek.nl



Duration: approx. 2:20

© 2015 Heritage Music Press (adm. by Smallstonemediasongs.com)  
Printed & distributed by KoormuziekNL, Dordrecht - www.koormuziek.nl  
Reproduction of this publication without permission of the publisher is a criminal offense subject to prosecution

ECC17.2174.01G



ECC17.2174.01G



ECC17.2174.01G

20 *mf* 5

I Run, run, run to the man - ger.

II

III

*mf*

Detailed description: This block contains the first system of music for measures 20 and 21. It features three staves: vocal (I, II, III), piano (treble and bass clefs), and a grand staff. The vocal line has lyrics 'Run, run, run to the man - ger.' with a fermata over 'run'. The piano accompaniment consists of chords and a rhythmic bass line. Dynamics include *mf*.

22

I Run, run, run to the man - ger.

II

III

Detailed description: This block contains the second system of music for measures 22 and 23. The vocal line continues with 'Run, run, run to the man - ger.' and a fermata over 'run'. The piano accompaniment continues with similar harmonic support.

24

I Run, run, run to the man - ger. There's a

II

III

Detailed description: This block contains the third system of music for measures 24 and 25. The vocal line has lyrics 'Run, run, run to the man - ger. There's a' with a fermata over 'run'. The piano accompaniment continues.

ECC17.2174.01G

6 26

I ba - by born in Beth - le - hem.

II

III

Detailed description: This block contains the first system of music for measures 26 and 27. It features three staves: vocal (I, II, III), piano (treble and bass clefs), and a grand staff. The vocal line has lyrics 'ba - by born in Beth - le - hem.' with a fermata over 'born'. The piano accompaniment consists of chords and a rhythmic bass line. Dynamics include *mf*.

28

I Ba - by born in

II

III Wise men trav - eled from a - far.

Detailed description: This block contains the second system of music for measures 28 and 29. The vocal line has lyrics 'Ba - by born in' and 'Wise men trav - eled from a - far.' with a fermata over 'born'. The piano accompaniment continues.

31

I Beth - le - hem.

II

III They were guid - ed by a

Detailed description: This block contains the third system of music for measures 31 and 32. The vocal line has lyrics 'Beth - le - hem.' and 'They were guid - ed by a' with a fermata over 'hem.'. The piano accompaniment continues.

ECC17.2174.01G

33 7

I Ba - by born in

II

III bril - liant star.

Detailed description: This block contains the first system of music for measures 33 and 34. It features three staves: vocal (I, II, III), piano (treble and bass clefs), and a grand staff. The vocal line has lyrics 'Ba - by born in' and 'bril - liant star.' with a fermata over 'born'. The piano accompaniment consists of chords and a rhythmic bass line. Dynamics include *mp*.

35

I Beth - le - hem. Oh, go, tell it on the

II

III

Detailed description: This block contains the second system of music for measures 35 and 36. The vocal line has lyrics 'Beth - le - hem. Oh, go, tell it on the' with a fermata over 'hem.'. The piano accompaniment continues.

37

I moun - tain, o - ver the hills and

II

III

Detailed description: This block contains the third system of music for measures 37 and 38. The vocal line has lyrics 'moun - tain, o - ver the hills and' with a fermata over 'tain.'. The piano accompaniment continues.

ECC17.2174.01G

8 39 *opt. div.*

I ev - 'ry - where. Oh, go, and tell it on the

II

III

Detailed description: This block contains the first system of music for measures 39 and 40. It features three staves: vocal (I, II, III), piano (treble and bass clefs), and a grand staff. The vocal line has lyrics 'ev - 'ry - where. Oh, go, and tell it on the' with a fermata over 'where.'. The piano accompaniment consists of chords and a rhythmic bass line. Dynamics include *opt. div.*.

41

I moun - tain that there's a baby born in

II

III

Detailed description: This block contains the second system of music for measures 41 and 42. The vocal line has lyrics 'moun - tain that there's a baby born in' with a fermata over 'tain.'. The piano accompaniment continues.

43

I Beth - le - hem.

II

III O won't you run to the man - ger, come.

Detailed description: This block contains the third system of music for measures 43 and 44. The vocal line has lyrics 'Beth - le - hem.' and 'O won't you run to the man - ger, come.' with a fermata over 'hem.'. The piano accompaniment continues.

ECC17.2174.01G

45  
I  
II  
III  
— and see the ba - by. Run to the man - ger, come—

47  
I  
II  
III  
— and see the ba - by. Run to the man - ger, come—

49  
I  
II  
III  
— and see the ba - by. *opt. div.* Run to the man - ger, come—  
— and see the ba - by. Run to the man - ger, come—

51  
I  
II  
III  
— and see the ba - by. Run, run, come—  
— and see the ba - by. Run to the man - ger, come—

53  
I  
II  
III  
— and see the ba - by. Run, come—  
— and see the ba - by. Run to the man - ger, come—

55  
I  
II  
III  
— and see the ba - by. Ba - by born in  
— and see the ba - by.

57  
I  
II  
III  
Beth - le - hem. There's a ba - by born in

59  
I  
II  
III  
Beth - le - hem. There's a ba - by born in

61  
I  
II  
III  
Beth le hem, Beth - le - hem.