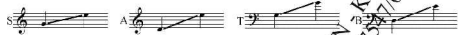




COMMITTED TO YOU

Words: Ben D. Ketting

Music: Ben D. Ketting Arr: Harry Koning



♩ = ca. 78

Com-mit-ted to You, men unison

I want my life Com-mit-ted to You, I give my heart

and my bod and soul to be com-mit-ted to You.

Unison Music Publishers, Hilversum, Holland

Duration 4'55 HCC17.0276.01F

13 *p* all unison

Com-mit-ted to You, I want my life to be com-mit-ted to You,

16 all div. *mf*

I give my heart and bod and soul to be com-mit-ted to You,

19 *p* *mp*

to be de-vot-ed and true. How can I (o) -

2

ECC17.0276.01F

24 *mp* all unison

low, fan-ning the flame. Through des-pair and hard-ship,

29 all div. *mf*

ne-ver be the same. re-a-range me,

33

move me in mys-ter-y, claim this life for Thine Lord, de-

3

ECC17.0276.01F

37 *p* all unison

vo-ted to You all off my days. Com-mit-ted to You, I want my life

41 *mf*

to be com-mit-ted to You, I give my heart and my bod - y and soul

45

to be com-mit-ted to You. Change my life and let it be.

4

ECC17.0276.01F

47 *mp* all unison
 Com-mit-ted to You, I want my life to be com-mit-ted to You, give my heart

G D/F# C#E

51
 to a faith - full God. Burn me with Your fire,

G/B C D#sus D D Em7 G

51 *mf*
 and my bod - y and soul to be com-mit - ted to You.

C D/C G/B F

63 *all div.*
 pu - ri - fy my love, make my choic - es,

G/B C D#sus D G/B

54 *p* to be de-vot-ed and true. *mf* all unison I sur-ren - der,

D#sus G D Em7 D7/F# G

67
 I want them to be true. E - ven in the val - ley,

C# G/B C# G/B

71 liv - ing my life for You. Com - mit - ted to You, I want my life

F D#sus D G D#sus D/F#

83
 I want my life to be com - mit - ted to You, give my heart

D/F# C#E G/B

75 to be com - mit - ted to You, give my heart and my bod - y and soul

C#E G/B C D/C

85 *f* and my bod - y and soul to be com - mit - ted to You, to be de - vot - ed and

C D/C G/B F D#sus D

78 to be com - mit - ted to you. *f* Change my life and let it be. *mf* all unison Com - mit - ted to You.

G/B F D#sus G

89 *p* *molto rit.* true. to be de - vot - ed and true.

Em7 G/B Am7 D#sus D7 G