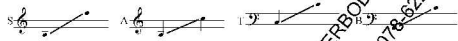


SANCTUARY

Lyrics: Angela & Travis Cottrell

Music: Angela & Travis Cottrell
Arr.: Kyle Hill



With energy (♩ = ca. 136)

Keyboards/Brass only... E7 D#F# E7 G#A

1st time: All voices Melody
2nd time: All parts

I want to sing in sanc-tu-a-ry; I want to dance be-fore Your throne.

A D Em D#F# G#2 G#m7 A

© 1998 First Hand Revelation Music/ Van Ness Press (a div. of Genevox Music Group)
For the world excl. USA Canada: Unison Music Publishers bv, Hilversum, Holland

Duration: 3'21
ECC 17.0077.01E

9

I want to shout out a hal-le-lu-jah! I want to wor-ship You with my song.

G D D A B- G D A F#m

13

I want to wor-ship You with my song.

G D A F#m A D G D A F#(A/D)

18

mf Woah unison
I feel a ring in my soul, deep in the heart of me.

A D G A D

23

I hear the Spir-it's beck-on-ing call. "Come, let me set you free."

G A Bm C G/B

26

Living in fear and bound up in pride, I've wait-ed far too long.

meat unison

G A D G A G/A D

30

I have be-liev-ed you give You my life; You have be-come my song.

G A A/B Bm C G/B A#m A

34

I want to sing in Your sanc-tu-a-ry; I want to dance be-fore

G/D D A D Bm G#2

37

Your throne. I want to shout out hal-le-lu-jah! I want to wor-ship You

G#m7 A G/D D A B- G D A

41

with my song. I want to wor-ship You with my song. Com-ing in-to Your sa-cred

F#m A Bm G D A F#(A/D) H#2 C#

46

pres - ence, oh, what a thrill to see Your face.

Dsus Bb C² D

52

Chang - ing me from glo - ry to glo - ry, I want my life

Fm F F#m F#m F#m G

57

to Your praise, give You praise! I want to sing in Your

Dm G F#m Am A A1/2 Bb

5

ECC 17.0077.01E

61

sane - tu - ar - y: I want to dance be - fore You throne. I want to shout out a

Bb7 Eb Fm E/G A² C-7/A Bb A-1/2 Bb

65

hal - le - lu - jah! I want to wor - ship, I want to wor - ship, I want to wor - ship You!

Bb Ab E/G A-G Eb/G A- E-G B-C

69

all unis - exology (Bourgeois)

from whom all bless - ings flow. Praise

F Am Bb F D- C E C/F E C/F E

6

ECC 17.0077.01E

74

Him all crea - tures here be - low. Praise Him a - bove, ye

C/E Dm Bb F C Dm C/E F G/A C

80

hast. Praise Fa - ther, Son and Ho - ly Ghost.

Dm C/F F F/A Gm/Bb Fm C Fm C

85

I want to praise Your sane - tu - ar - y: I want to dance be - fore Your throne.

Bb7 F C F Gm F/A Bb² Bb+7 C

7

ECC 17.0077.01E

89

I want to shout out a hal - le - lu - jah! I want to wor - ship You with my song.

D-F E C Dm B- F C

93

I want to wor - ship You with my song. I want to dance.

B- F C F/A B- F/A

97

I want to hal - le - lu - jah!

B- F/A C B/C B-F F C-F F Bb B-C F

8

ECC 17.0077.01E